

PRODUCTION SPECIFICATIONS

THE LARGE HALL (STORE SAL)



Table of Contents

Contact information	2
No smoking	2
The Large Hall (Store sal)	2
Driving instructions: Load in	3
Load in	3
Dressing rooms	4
Fly bars	5
Audio equipment	6
Ligthing equipment	6
Power	7
dB Limits.....	7
Special effects	7



Det Musiske Hus

FREDERIKSHAVN

Contact information

Det Musiske Hus
Rådhus Alle 98
9900 Frederikshavn
Tlf.: (+45) 96 20 10 50
info@arenanord.dk

Technical Manager
Morten Sønderkov
Tlf.: (+45) 23 31 28 43
morten@arenanord.dk

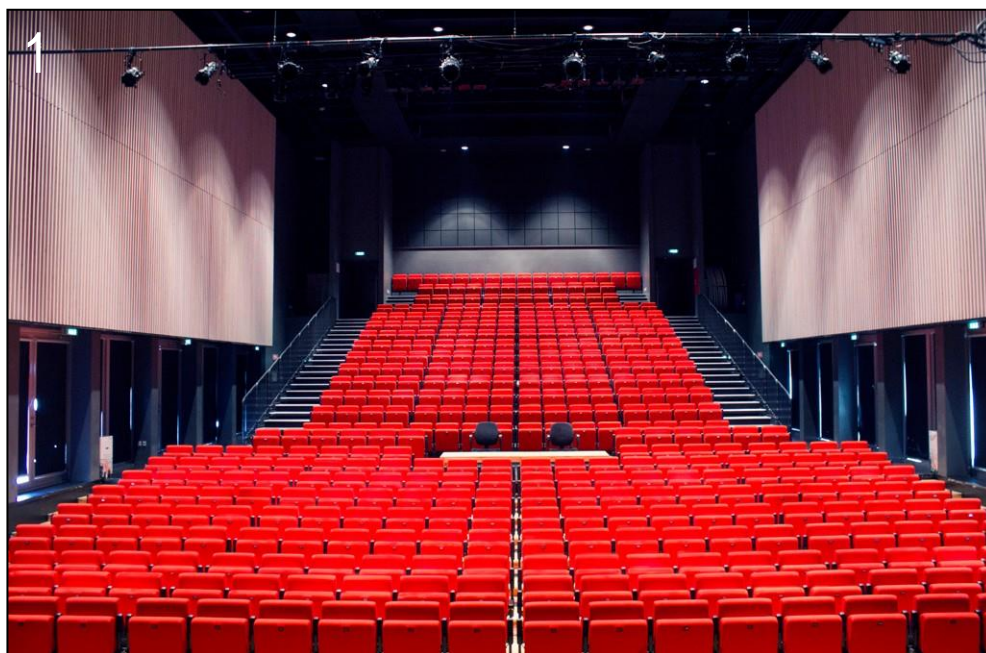
Booking Manager
Jens-Ole Amstrup
Tlf.: (+45) 23 23 01 31
jensole@arenanord.dk

No smoking

Smoking is not allowed inside Det Musiske Hus at any time.



The Large Hall (Store sal)



1) Theatre Setup:
Capacity: 424 (seated)



2) Standing Setup:
Capacity: 900 (standing)

3) Café Setup: Capacity: 296 Total (80 seated at tables) + (216 seated)

Driving instructions: Load in

From the north of Frederikshavn:

Leave [route 40](#) and turn right onto [Nørregade \(route 35\)](#) for 0,2 kilometres

Turn left onto [Barfredsvej](#) for 1,2 kilometres

Turn left onto [Rimmensgade](#) for 0,35 kilometres

Turn left onto [Rådhus Alle](#) for 0,27 kilometres and you reach Det Musiske Hus (on your right)

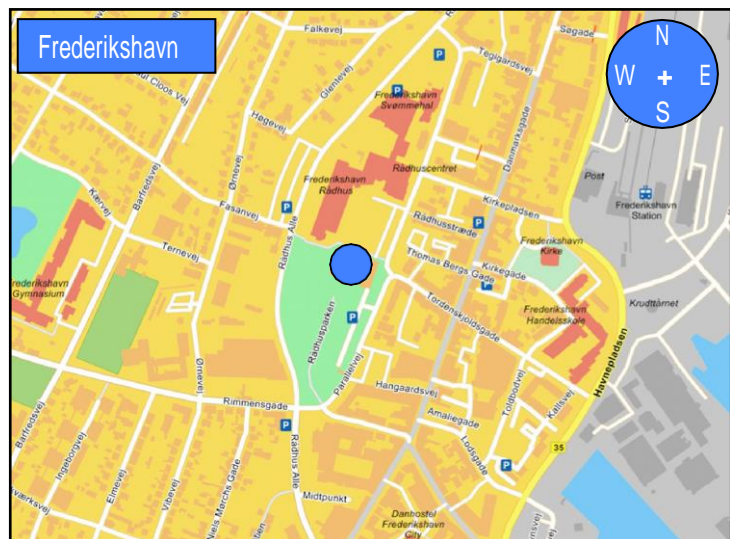
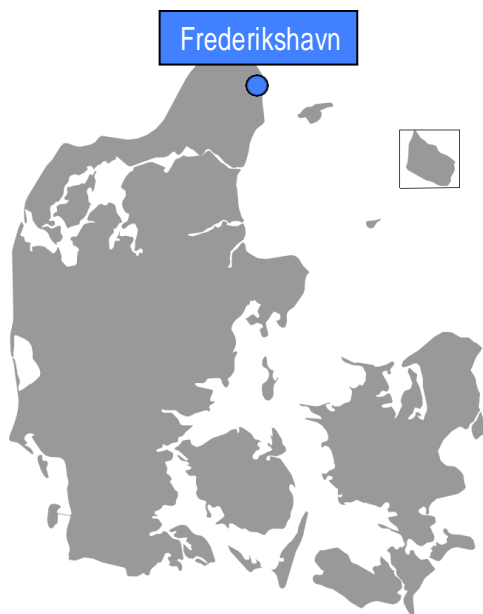
From the south of Frederikshavn:

Merge onto [highway E45](#) and keep left

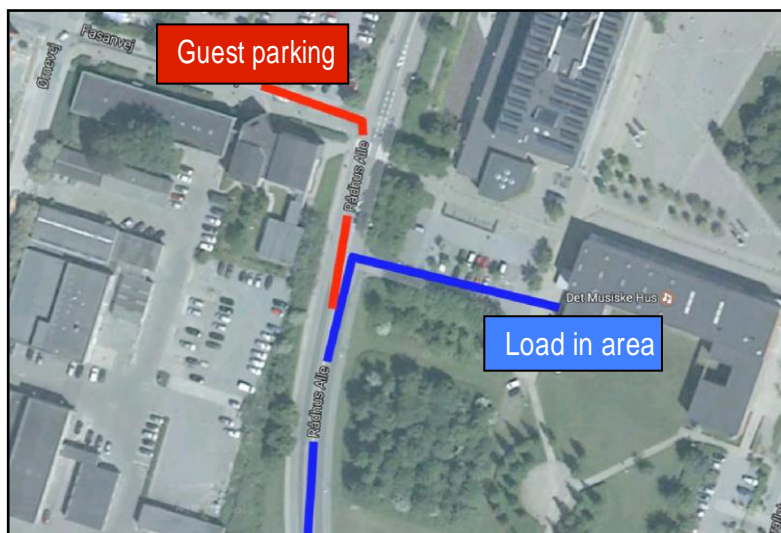
Follow signs for [Frederikshavn/Sæby/Bouet](#)

Continue straight onto [Havnepladsen](#) for 0,15 kilometres

Turn left onto [Rådhus Alle](#) for 0,75 kilometres and you reach Det Musiske Hus (on your right)



Load in

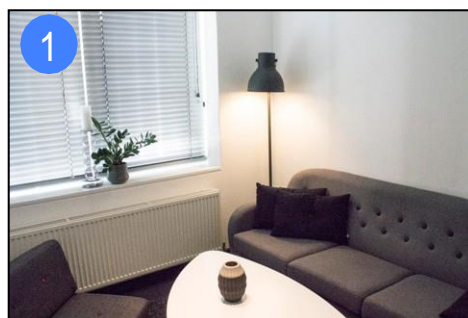
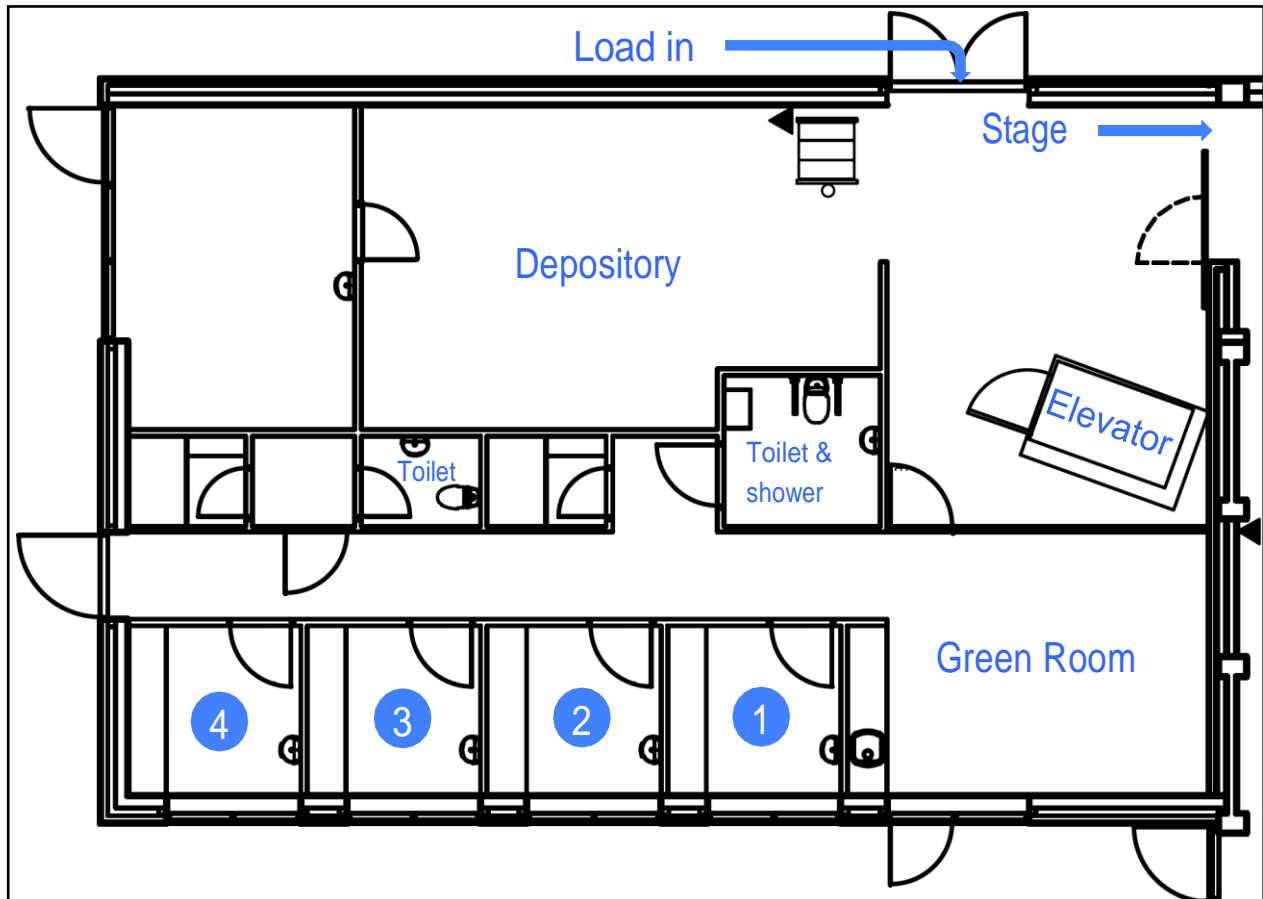


To get to load in area, make sure to turn right on [Rådhus Alle](#) (marked in [blue](#)) and NOT turn left on [Fasanvej](#) (marked in [red](#)) even though it says 'Parking area'. This is for guests, NOT technicians and artists.

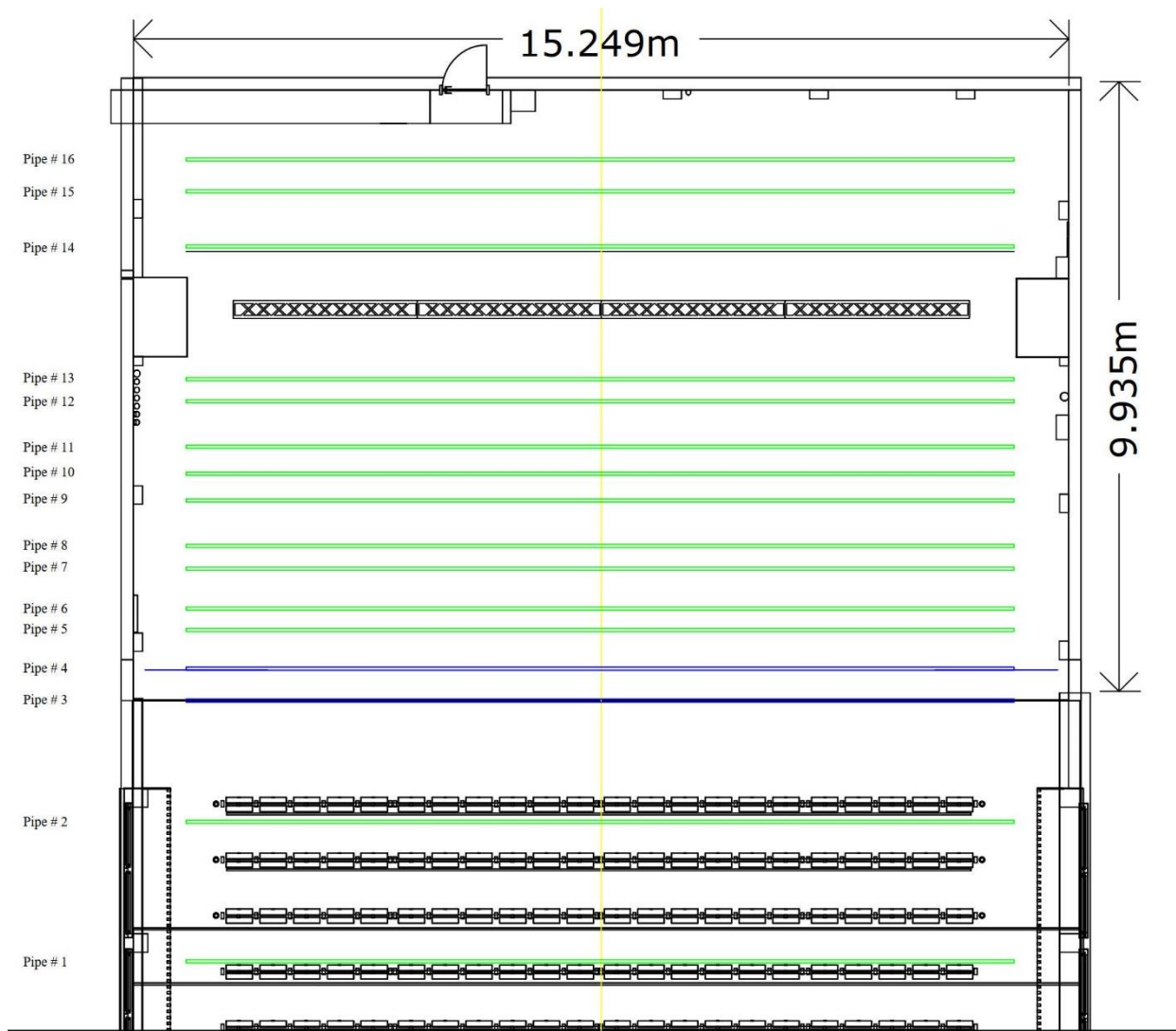
Dressing rooms

A total of 30 seats distributed like this:

- 3 soloist dressing rooms with tables, mirrors and washbasin for 4 people in each.
- 1 soloist dressing room with couch and chair for 2 people.
- 1 green room with kitchen sink, dishwasher, TV and chair for 16 people.



Fly bars



Fly bars marked in **green** are motorized (max. load 415 kg. spread evenly)
 Fly bars **3** and **4** are for front covering and curtain, and cannot be used

Audio equipment

FOH Console:

1 x Soundcraft Vi3000 with Realtime Rack and Soundcraft Studer Vi Stagebox (48 inputs, 24 outputs, 4 AES outputs)

Main PA:

16 x Martin Audio MLA Mini
4 x Martin Audio MSX

Ekstra subs:

2 x Martin Audio CSX218

Monitor amps:

2 x QSC PLD4.5
(8 sends)

Monitor wedges:

8 x Martin Audio LE1200

DI:

6 x BSS AR133 DI
8 x LD Systems LDI Active 02

Microphones:

1 x Shure Beta 52
1 x Shure Beta 91
6 x Shure SM 57
4 x Shure Beta 58A
2 x Shure SM 58
5 x Sennheiser E 604
2 x Sennheiser E 606
4 x Røde NT5
2 x AKG 535 EB
2 x AKG C214
1 x DPA d:factoll
5 x DPA d:vote 4099 with various clips

Stands:

10 x K&M small w. round base
14 x K&M Large w. boom
2 x K&M Windup

Wireless systems:

1 x Shure ULXD4D
2 x Shure ULXD2 Beta 58A

Ligthing equipment

FOH Console:

1 x Chamsys Magic
MQ250M

Dimmers:

2 x 12 ch. Electron Actor 716. dimmer (total of 24 circuits) with patchbay on stage (stageright)
2 x Avolite PowerCube PDU and dimmer (total of 36 circuits)

Conventional:

6 x ETC Source 4 575 jr. zoom profil
4 x ETC Source 4 750 zoom profil
4 x 6-cell 1000W PAR64-cp61
8 x 1000W PAR64-cp61 floor cans
5 x 2-cell blinders

Movinglights:

8 x Martin Mac Aura
16 x Martin Mac Allure Profile

Smoke:

1 x Swefog Duramax intellahazer 1k8

Power

1 x 3x125 A CE (stageright)

Devided on stageleft, stageright and upstage is the following:

4 x 3x63 A CE

4 x 3X32 A CE

4 x 3x16 A CE

8 x 230 V

All outlets are paired 2 and 2, so do not calculate full load at all outlets.

dBLimits

To ensure a healthy concert experience to our audience, and to comply with EU noise regulations towards our employees, we are enforcing a dB limit of 103 dB(A) averaged over 15 minutes ($L_{eq 15} = 103 \text{ dB(A)}$).

Special effects

Note that the use of fire and pyrotechnics are only allowed with a valid approval from the Danish 'Beredskabsstyrelsen'.

The use of confetti is allowed in Det Musiske Hus.